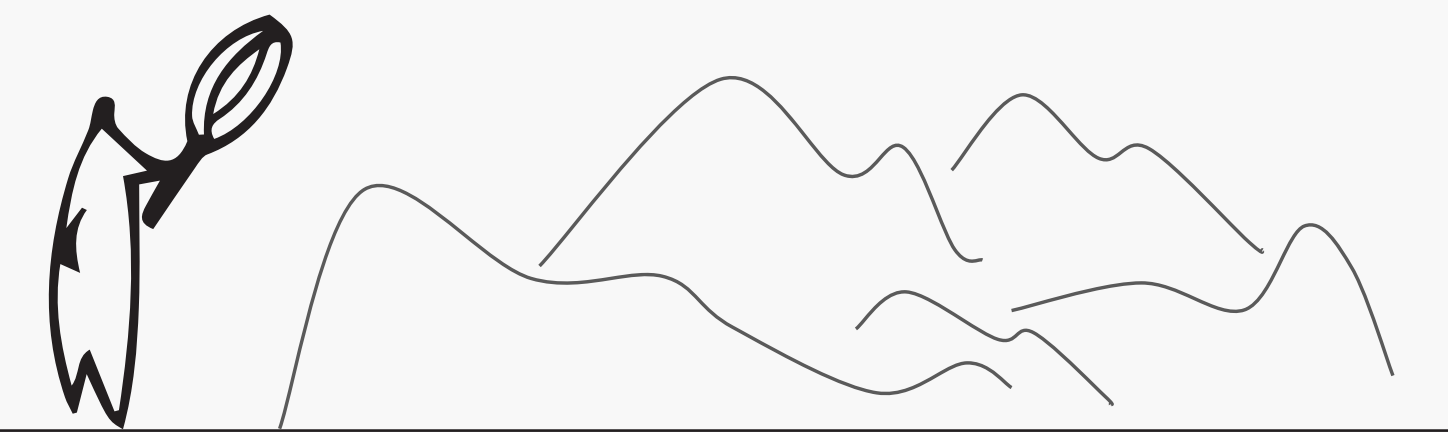


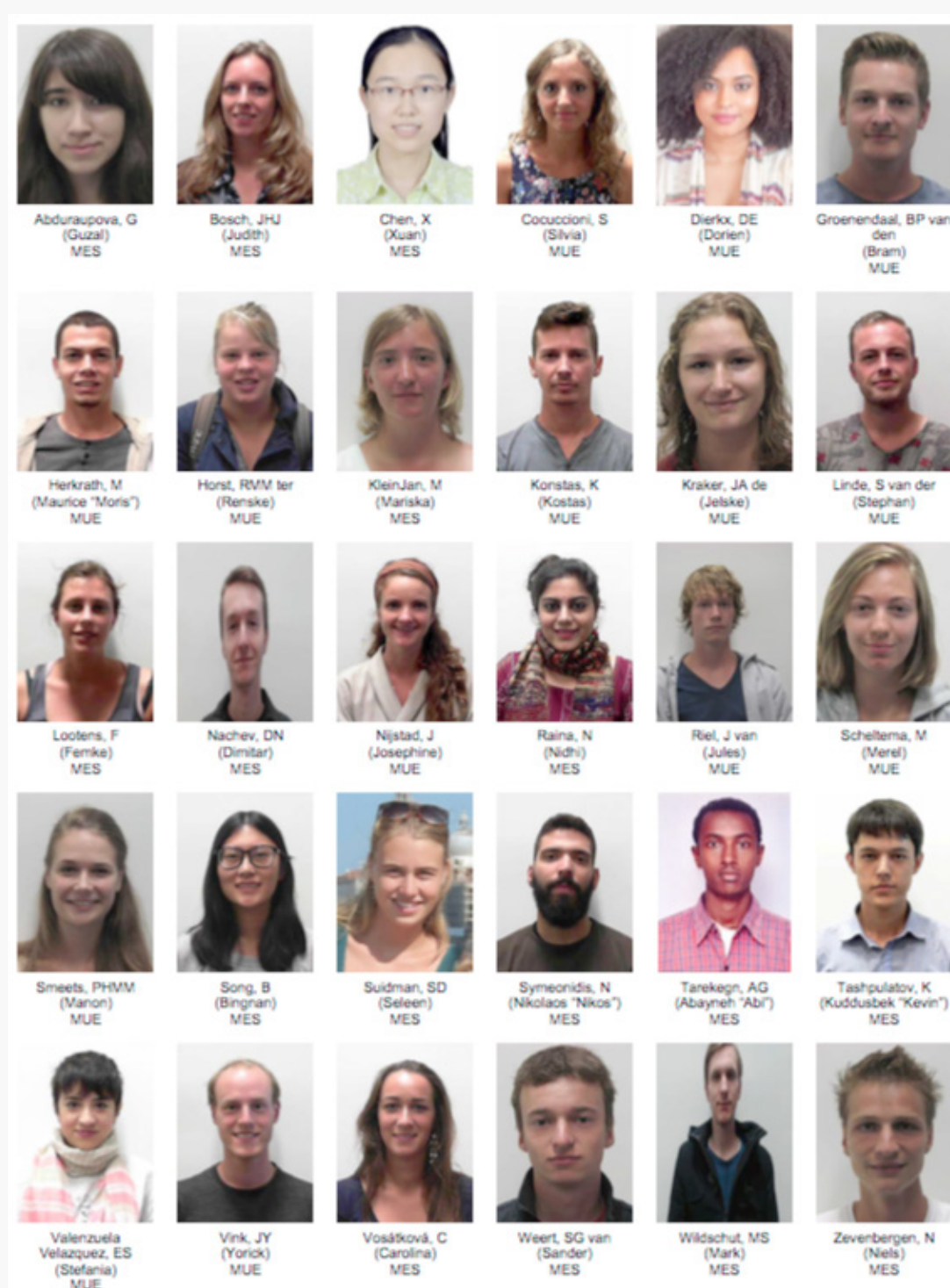
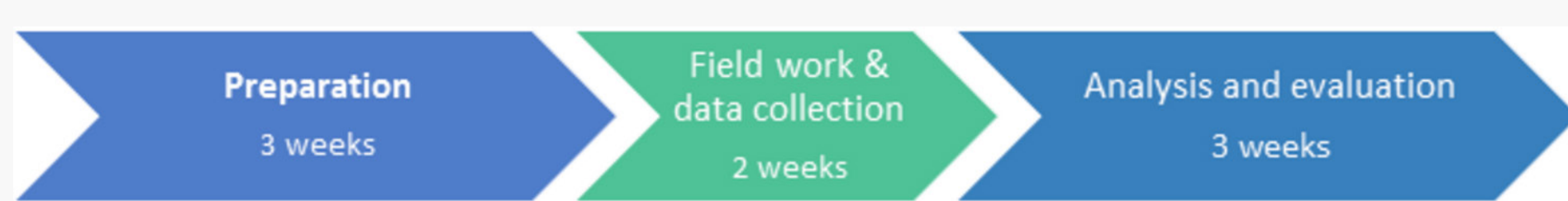
Prague Hillsides



Who are we

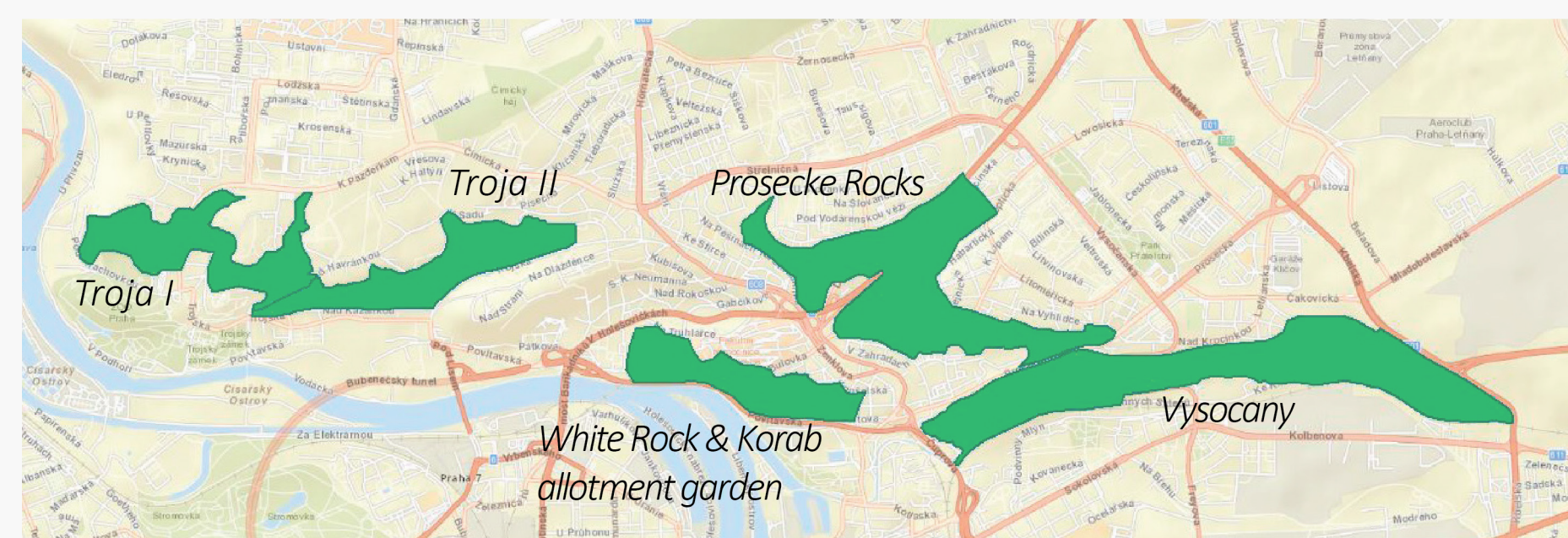


- Wageningen University is 47th in international University ranking
- Renowned for its expertise in environmental sciences [4th in international ranking]
- The European Workshop, what (is it) and how (does it work)?
 - A workshop in a group of 30 people that addresses an actual issue in consultancy to a Client [So far there is a history of successful and fruitful project carried out by the WUR EUW]
 - The Workshop lasts 8 weeks



Organisation

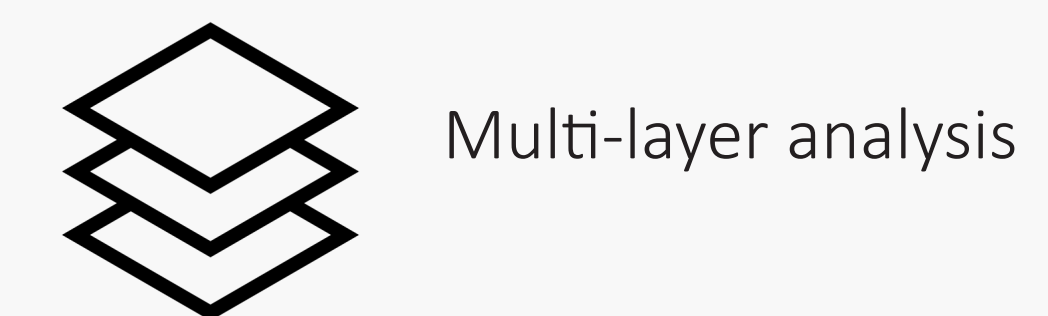
- A group of 30 people with a composition reflecting diversity.
- Our strength is to be multinational and multicultural
 - Different nationalities and cultures
 - Different ages and experiences
- Our strength is to be transdisciplinary and multidisciplinary
 - Different backgrounds and bachelor studies + some with work experience
 - Different Master programs, mostly Urban Environmental Management and Environmental Sciences. Within those programs we have different specialisations/tracks
- We operate in multiple groups simultaneously:
 - 5 Geo groups, one for each hillside [map]
 - Troja I
 - Troja II
 - White Rock and Korab allotment garden
 - Prosecke Rocks
 - Vysocany



- 5 Expert groups, one for each topic
 - Policy and Stakeholder Analysis
 - Green Infrastructure: Physical and Ecological Analysis
 - Green Infrastructure: Management Practice and Use Analysis
 - Public Perception Analysis
 - Scenario Development
- A Management Team consisting of 5 persons to coordinate the work
- Matrix with the organisation of all three (from ToR)
- Further we have many more groups and teams:
 - A Logistics Team for organisational matters during the fieldwork
 - Ad-hoc groups and other teams which are formed whenever necessary and useful (e.g. presentations, posters, editing, etc.)

Methodology

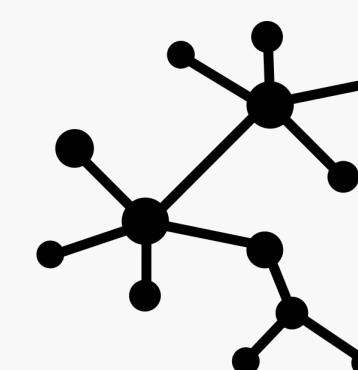
- Our Goal
 - Improve the quality of life for the Citizens of Prague
- Our Purpose
 - Define opportunities for current and future functions of Prague's hillsides
- Our Outputs



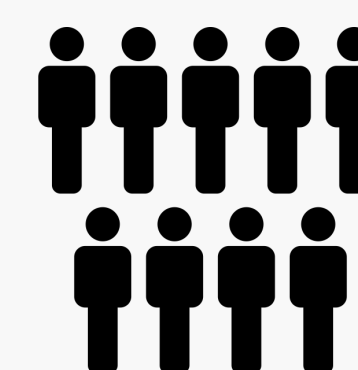
Multi-layer analysis



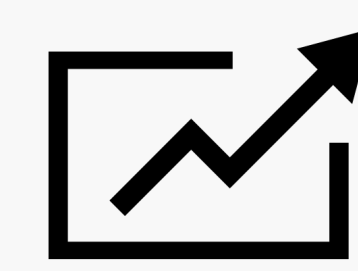
policy analysis;



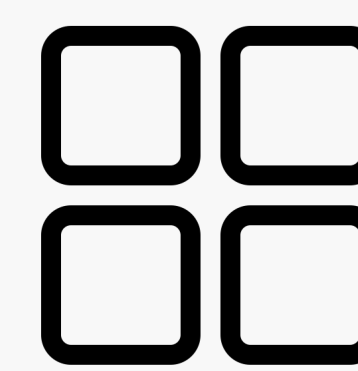
stakeholder analysis



public perception analysis



Trends



scenario development



swot

- Finally we produce one synthesis report and an additional product for our Client
 - One extensive report for IPR
 - One adapted, simplified and informational report oriented towards the general public

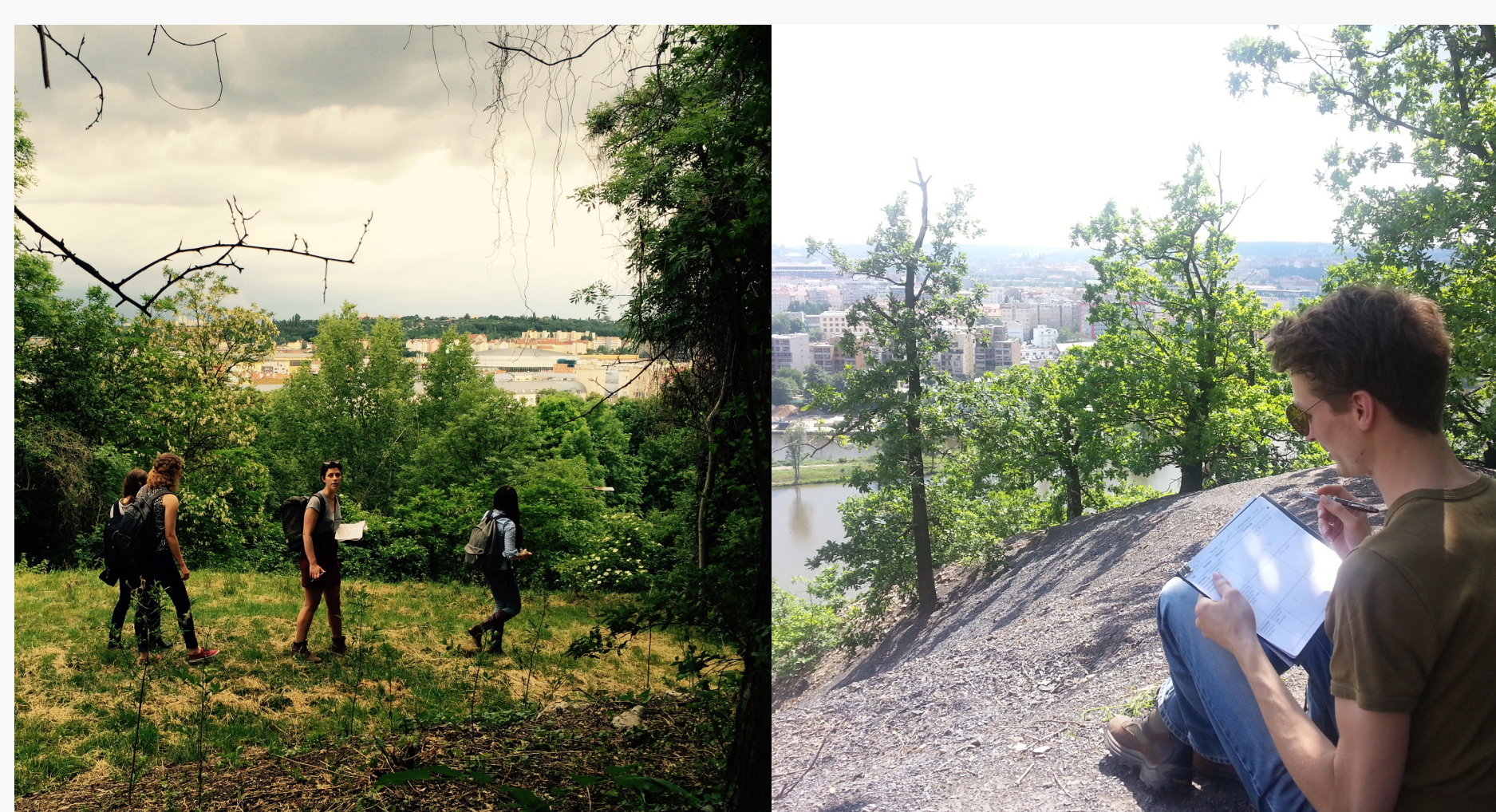
Questionnaires

- We have two-sided Czech and English Questionnaire with 33 questions
- We want to gain insights into the public perception related to the issues of the hillsides and their use



Observations

- We want to obtain objective and subjective notes at the same time
 - We do field observations and fill in descriptive notes to a frame.
 - Then we add on our own interpretations and impression about the area.



Interviews

- We carried out numerous interesting and informative interviews with a range of stakeholders involved in the area and the City Planning
 - Experts
 - Public and private stakeholders
 - Area specific
 - Topic specific

